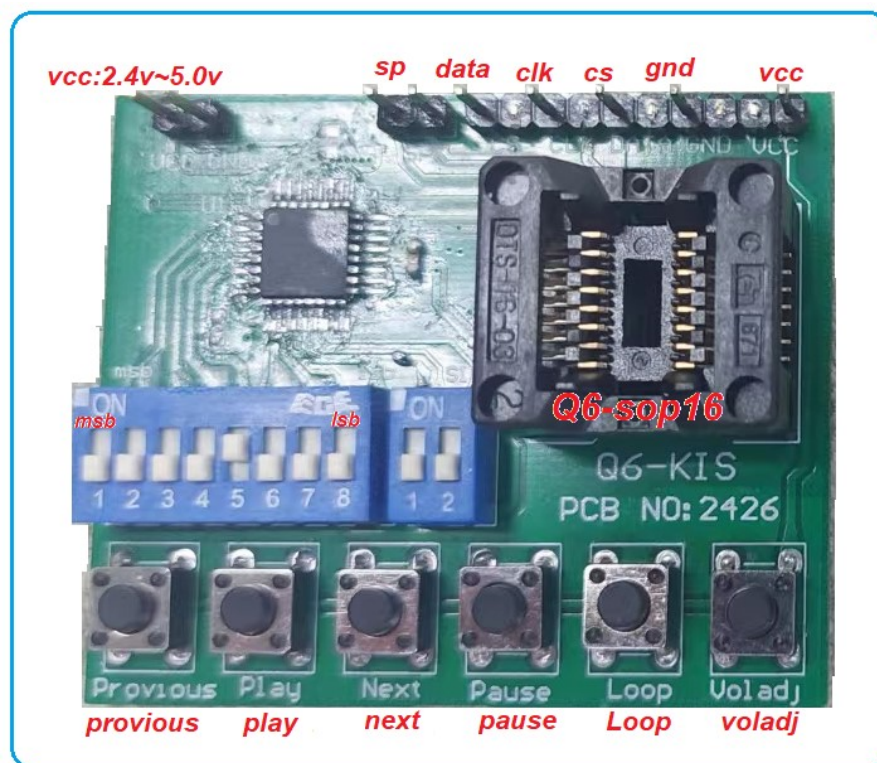
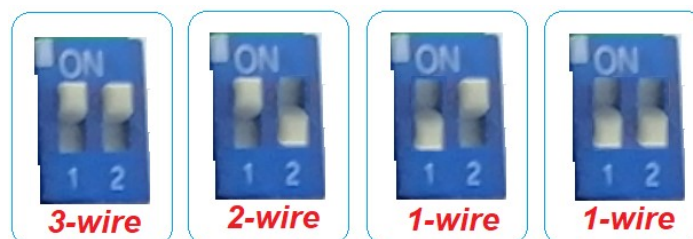


aP58Q6-KIS16 user manual

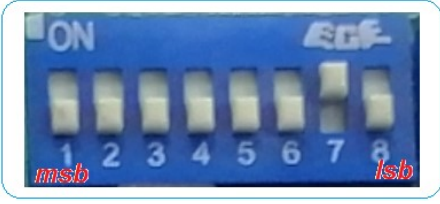
- Part no. : Q6 KIS
- Pcb no. : 2426
- Pcb size : 55 x 46 mm
- VCC : 2.4V ~ 5.0V
- Support cpu : 1-wire , 2-wire , 3-wire cpu serial mode



- Serial mode options :



Command :

command	D7	D6	D5	D4	D3	D2	D1	D0
Play Previous [Previous key]	FD							
	$s3 \rightarrow s2 \rightarrow s1 \rightarrow sn \rightarrow sn-1 \rightarrow sn-2 \rightarrow \dots s2 \rightarrow s1 \rightarrow sn \rightarrow sn-1 \rightarrow \dots$							
play sentence(n) [play key]	01 ~DF							
	 address[02]: 0000-0010							
Play Next [Next key]	FC							
	$s1 \rightarrow s2 \rightarrow s3 \rightarrow s4 \rightarrow s5 \rightarrow \dots sn \rightarrow s1 \rightarrow s2 \rightarrow \dots$							
Pause / Resume [Pause key]	FE							
	Pause / resume							
repeat off	F8							
repeat on [Loop key]	F9							
	Repeat on / repeat off [on/off]							
set volume (n) [voladj key]	0E							
	$vol6 \rightarrow vol5 \rightarrow vol4 \rightarrow vol3 \rightarrow vol2 \rightarrow vol1 \rightarrow vol2 \rightarrow vol3 \rightarrow vol4 \rightarrow vol5$ $\rightarrow vol6 \rightarrow vol1 \rightarrow vol2 \rightarrow vol3 \rightarrow \dots$ Vol6=15 , vol5=12 , vol4=9 , vol3=6 , vol2=3 , vol1=1							

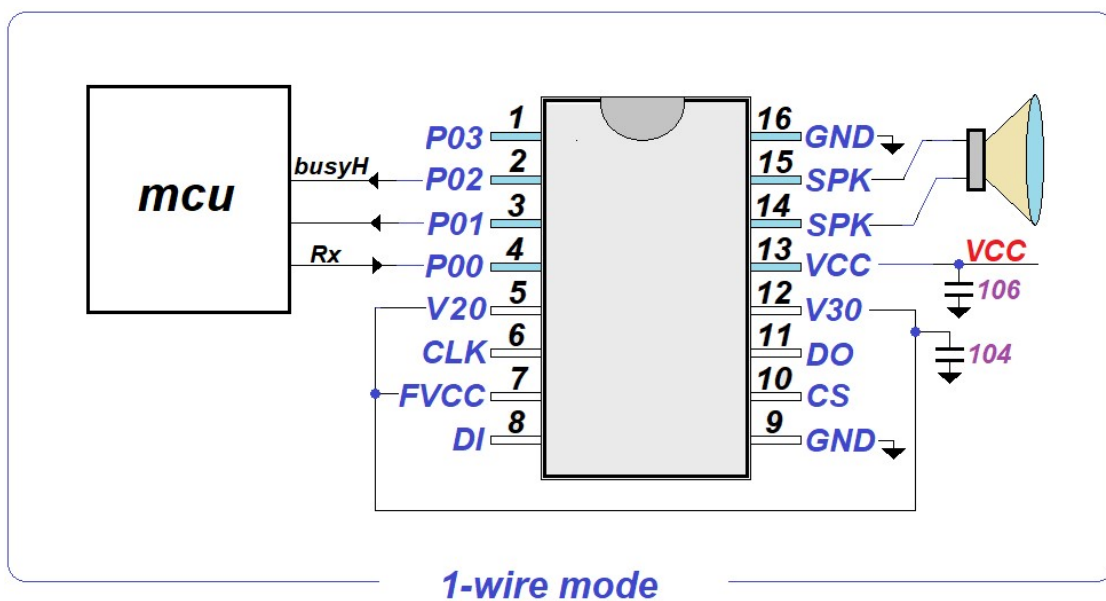
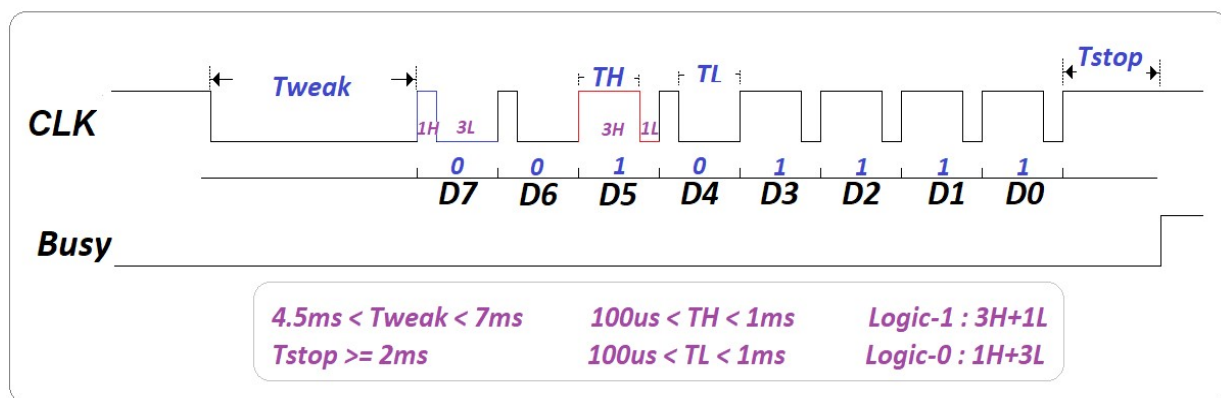
1. 1-wire mode :

P00	P01	P02	P03
Rx	Out	Out	Out/Reset

Out option : busyH , busyL , 3Hz , 6Hz , LED-dyna , stopH , stopL

P03 = input- reset (option)

P01 & P02 output setup initial [high]



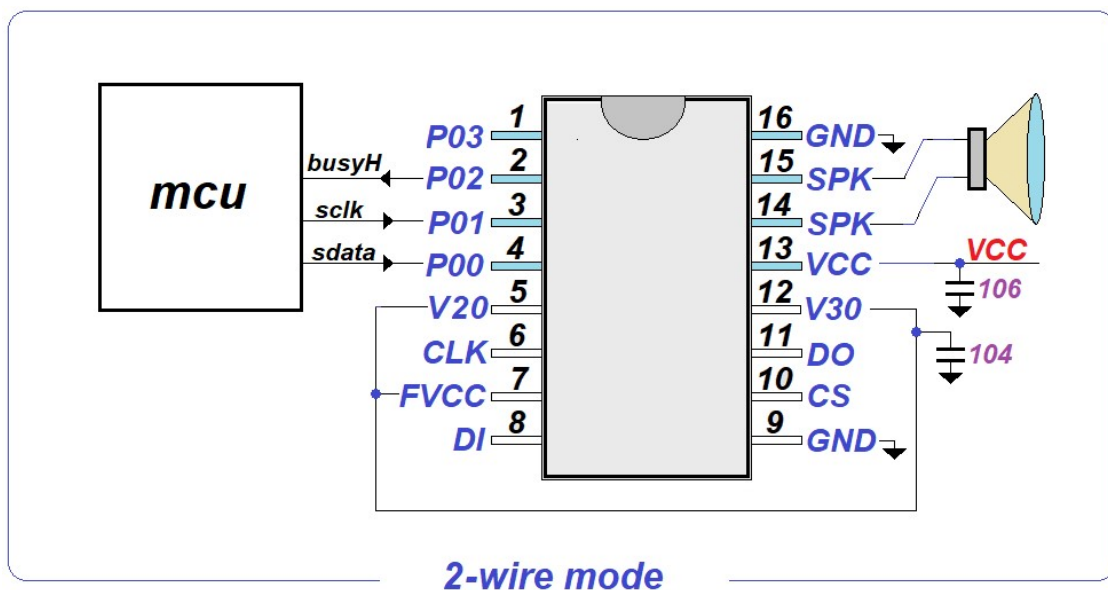
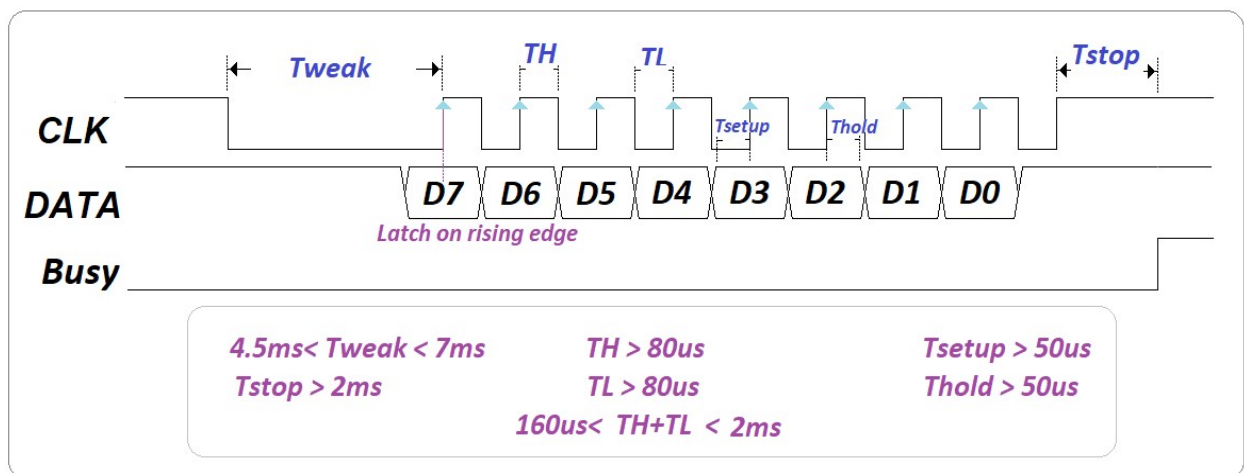
2. 2-wire mode :

P00	P01	P02	P03
sdata	sclk	Out	Out/Reset

Out option : busyH , busyL , 3Hz , 6Hz , LED-dyna , stopH , stopL

P03 = input- reset (option)

P02 output setup initial [high]

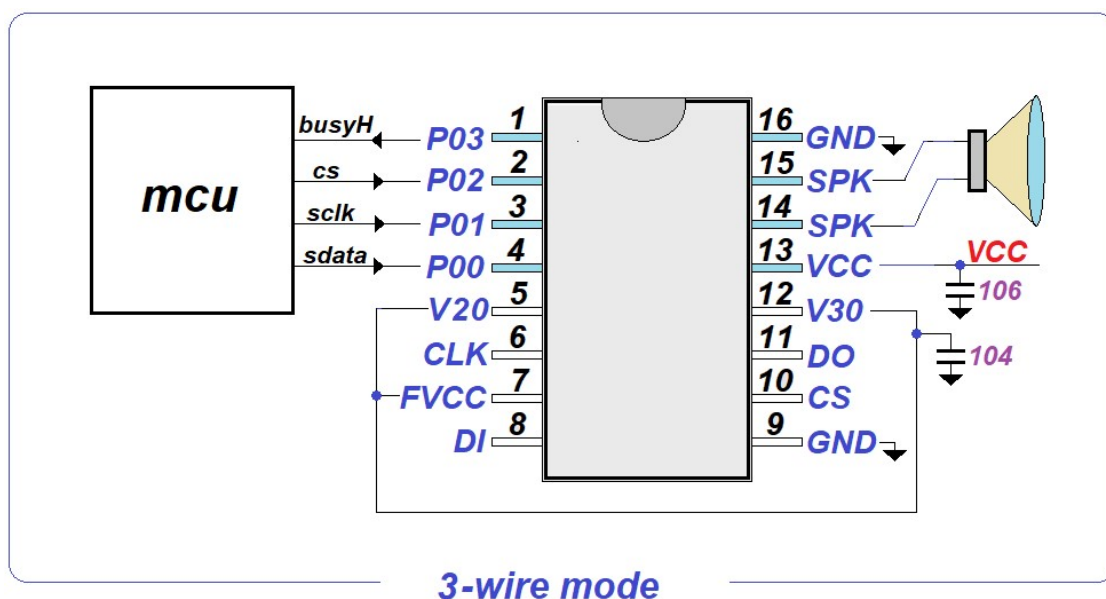
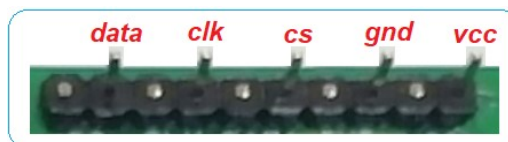
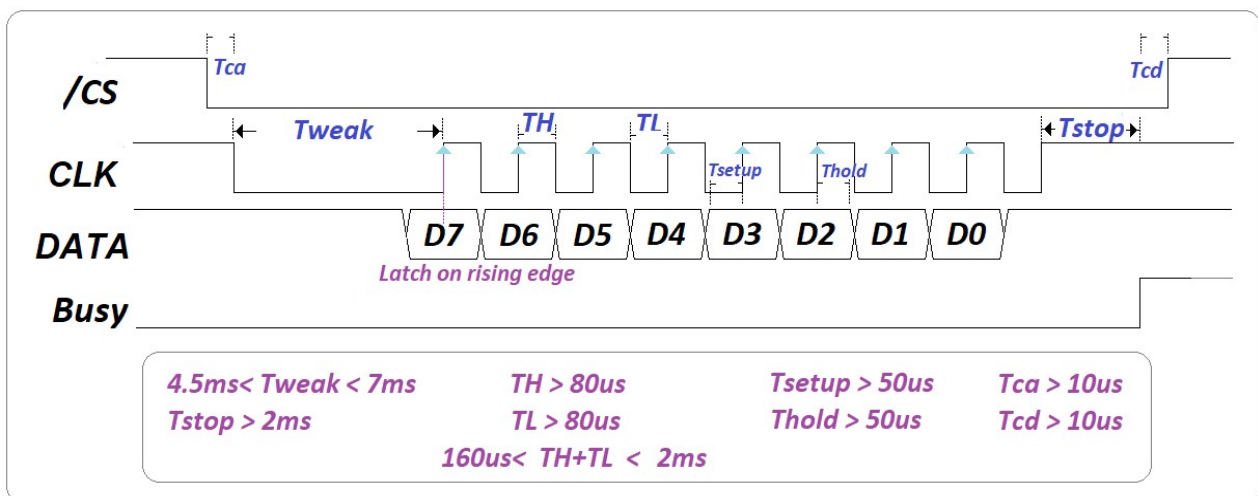


3. 3-wire mode :

P00	P01	P02	P03
sdata	sclk	Cs	Out/Reset

Out option : busyH , busyL , 3Hz , 6Hz , LED-dyna , stopH , stopL

P03 = input- reset (option)



21 OCT 2024

aP58Q6-KIS16 user manual.
